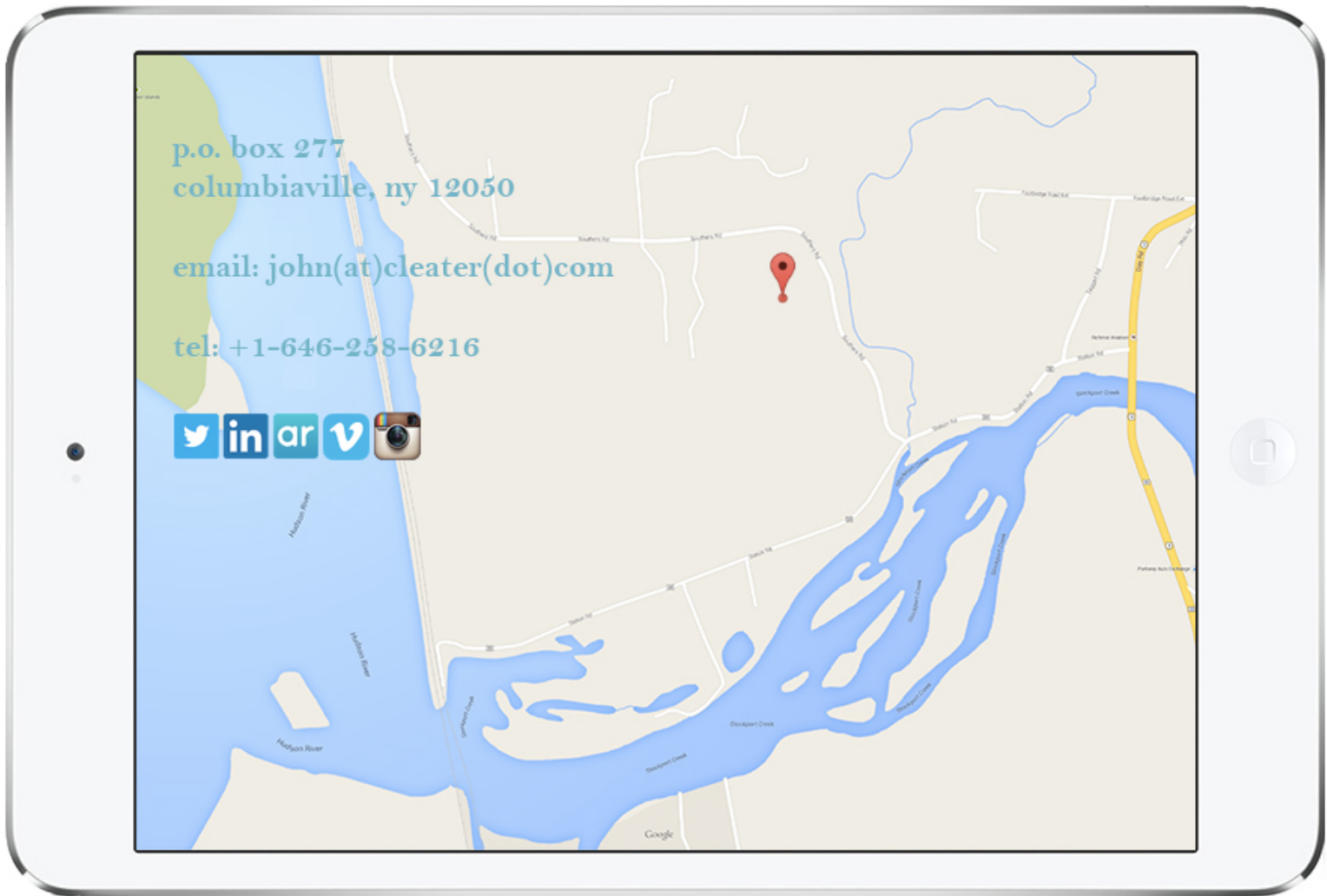


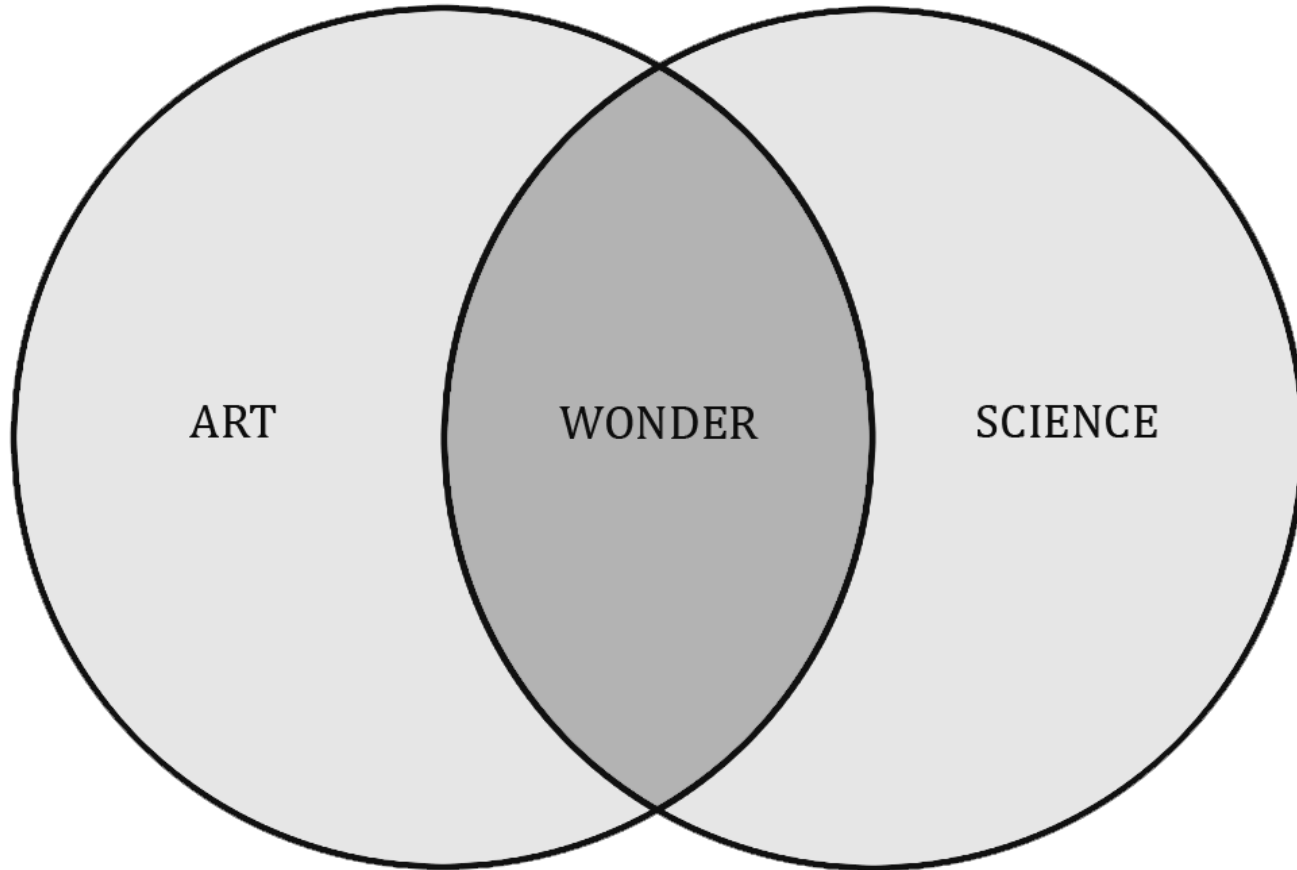
# John Cleater

work • about • news • contact

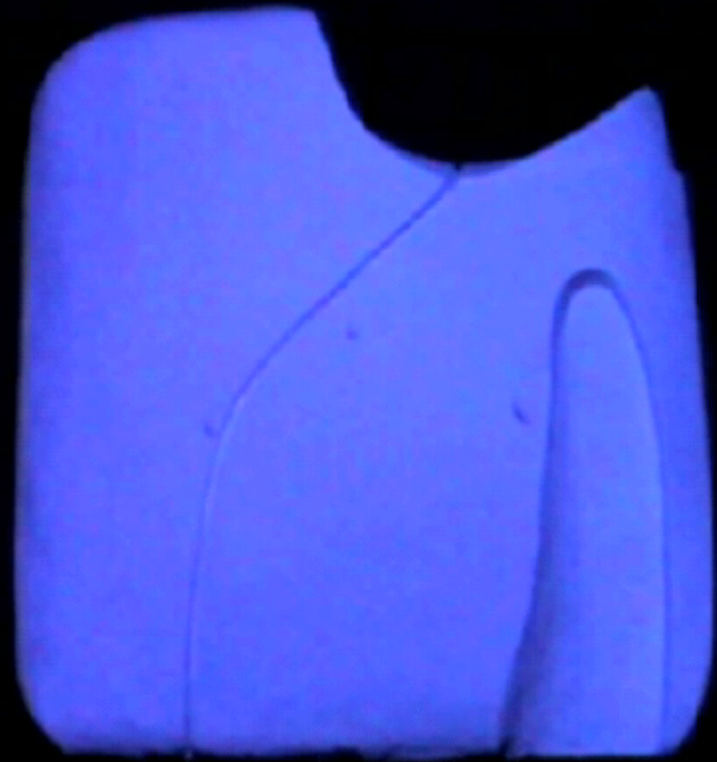


# In-Between Space

John Cleater



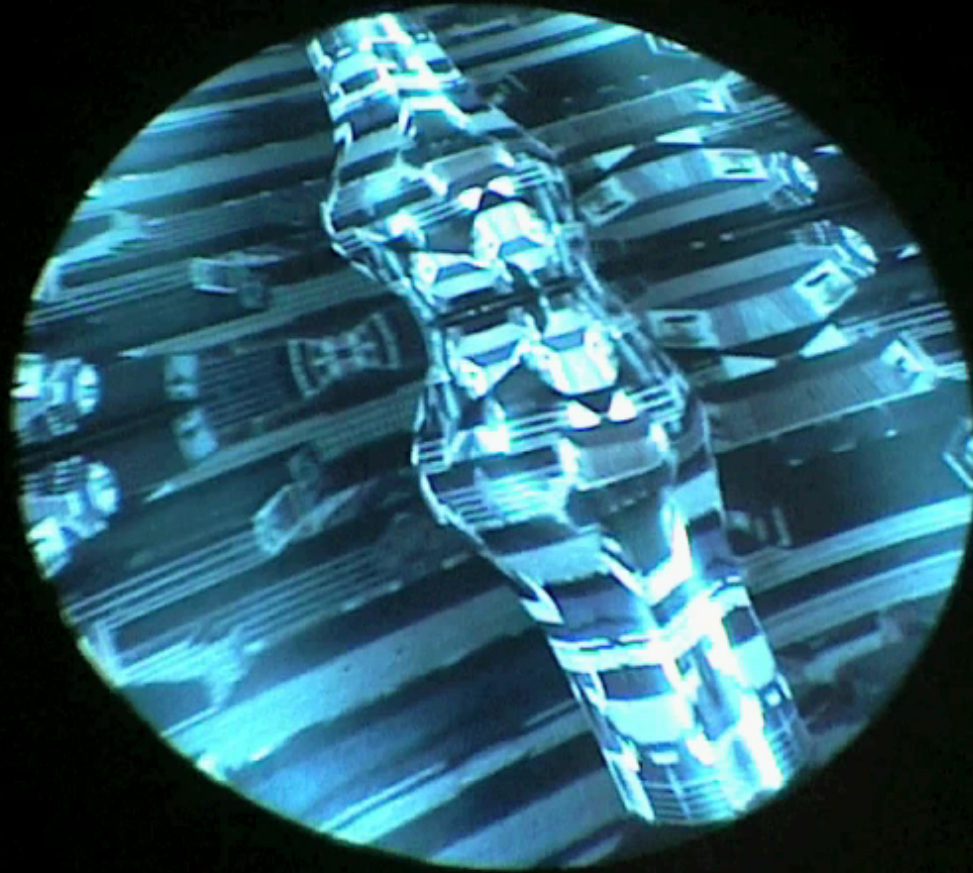
Asymptote: Flux 1, CCAC, 1999



# Asymptote: Flux 2, Venice Biennale 2000



Asymptote: Flux 3, Documenta XI 2002



# Kohler Arts/Industry: Raw cast brass



# Appendages/ Chrome

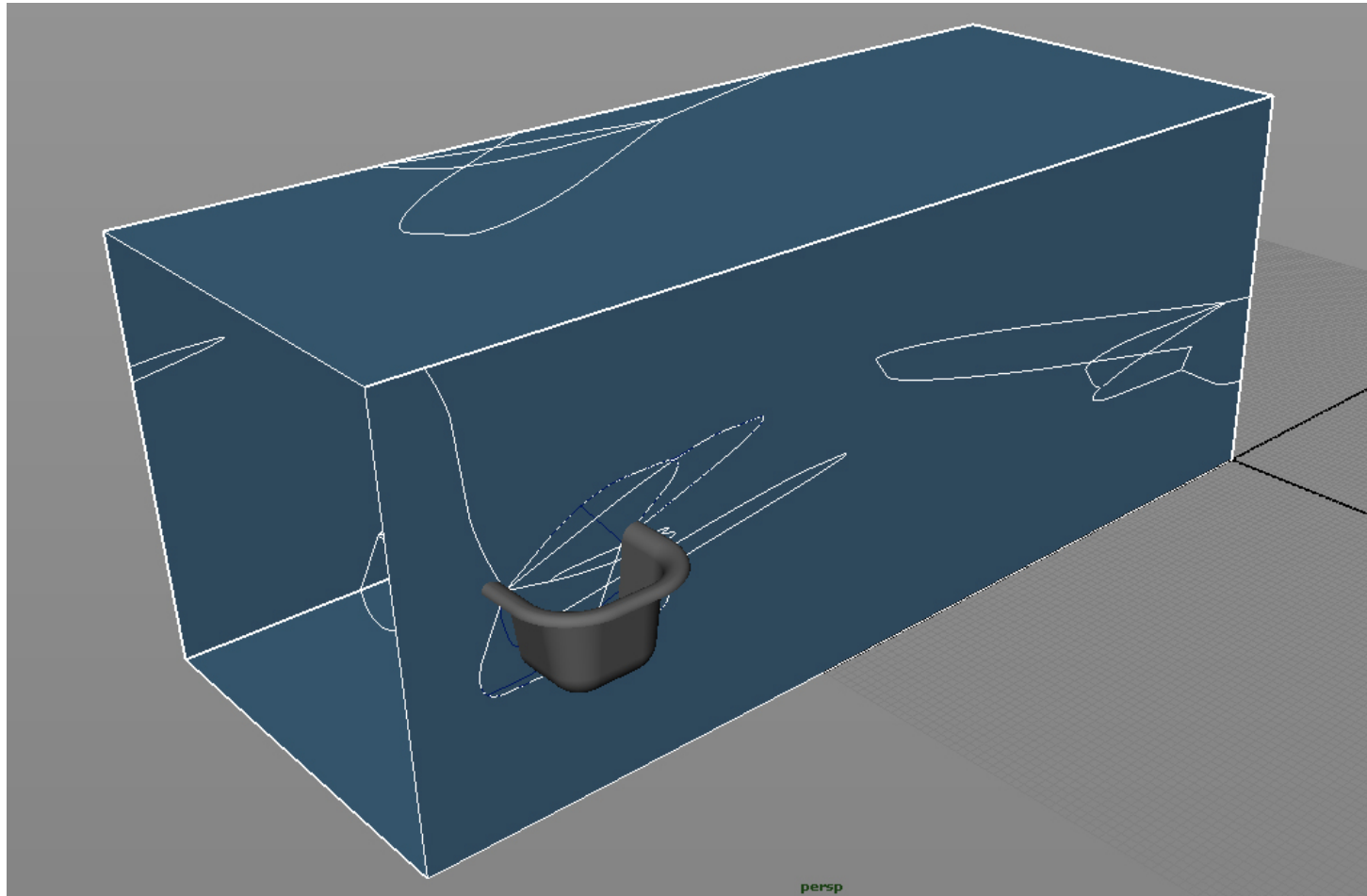


# Appendages 2007/ Form





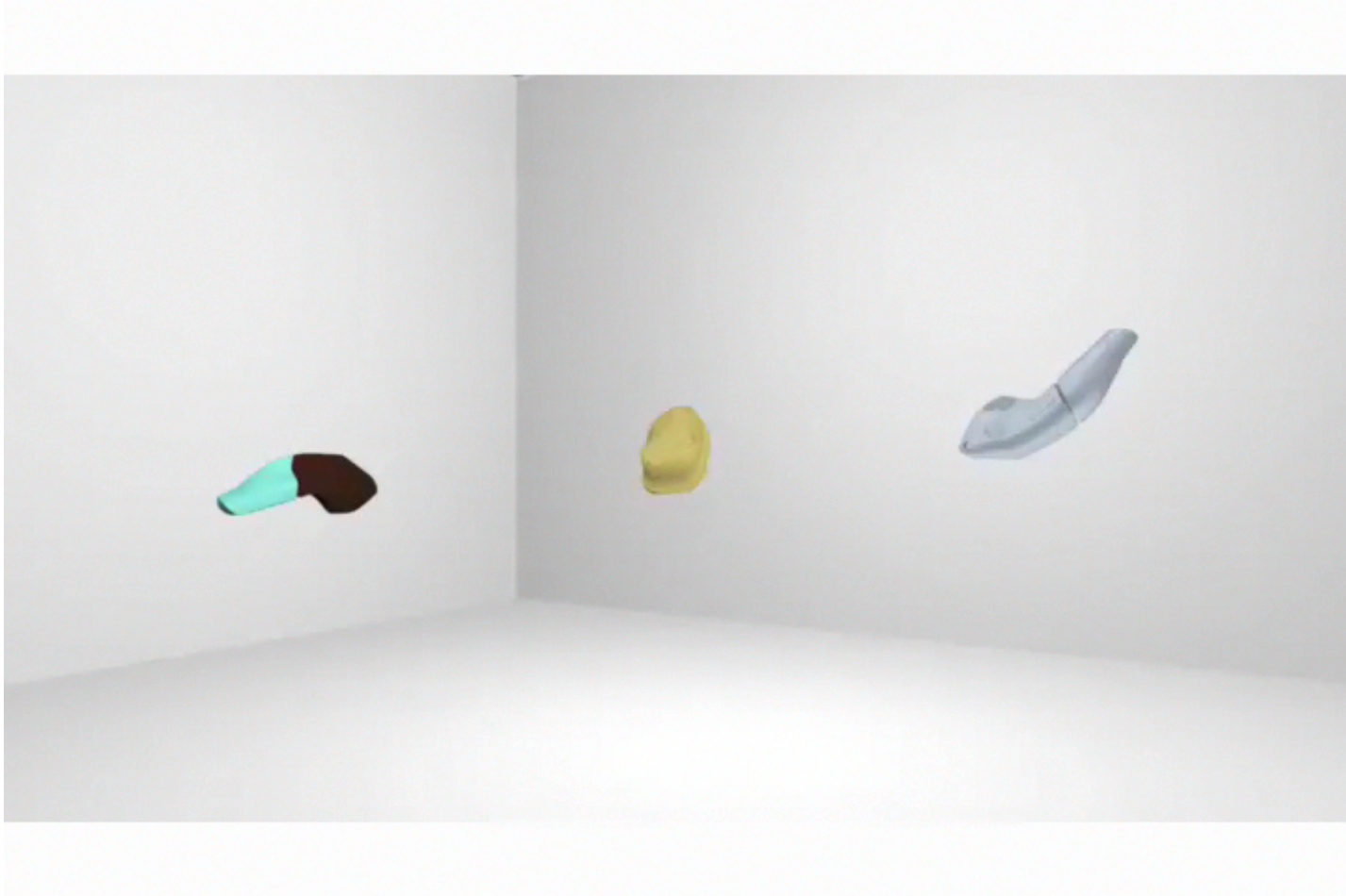
# Appendages/ Form generation



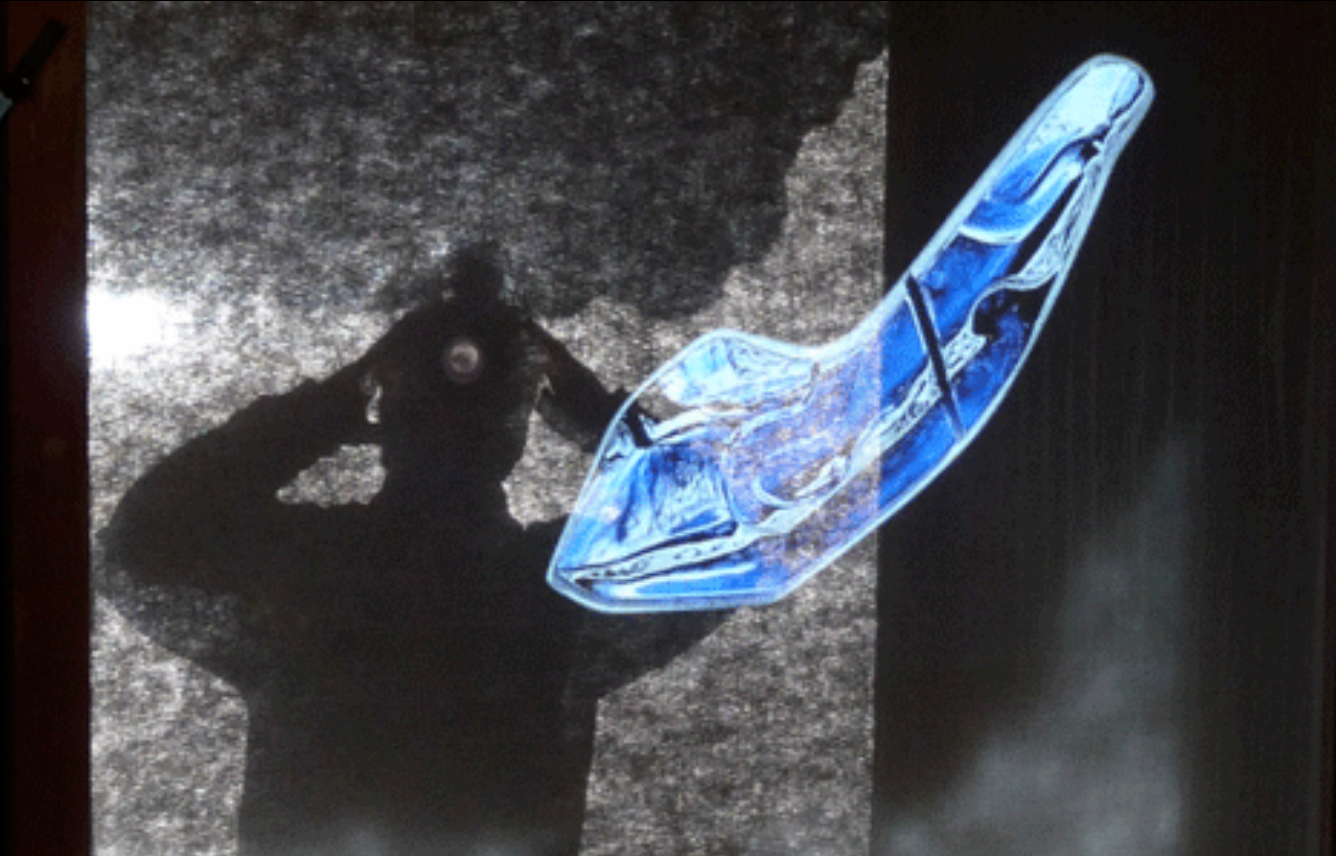
# Appendages @ Nicole Fiacco Gallery



# Appendages @ Nicole Fiacco Gallery



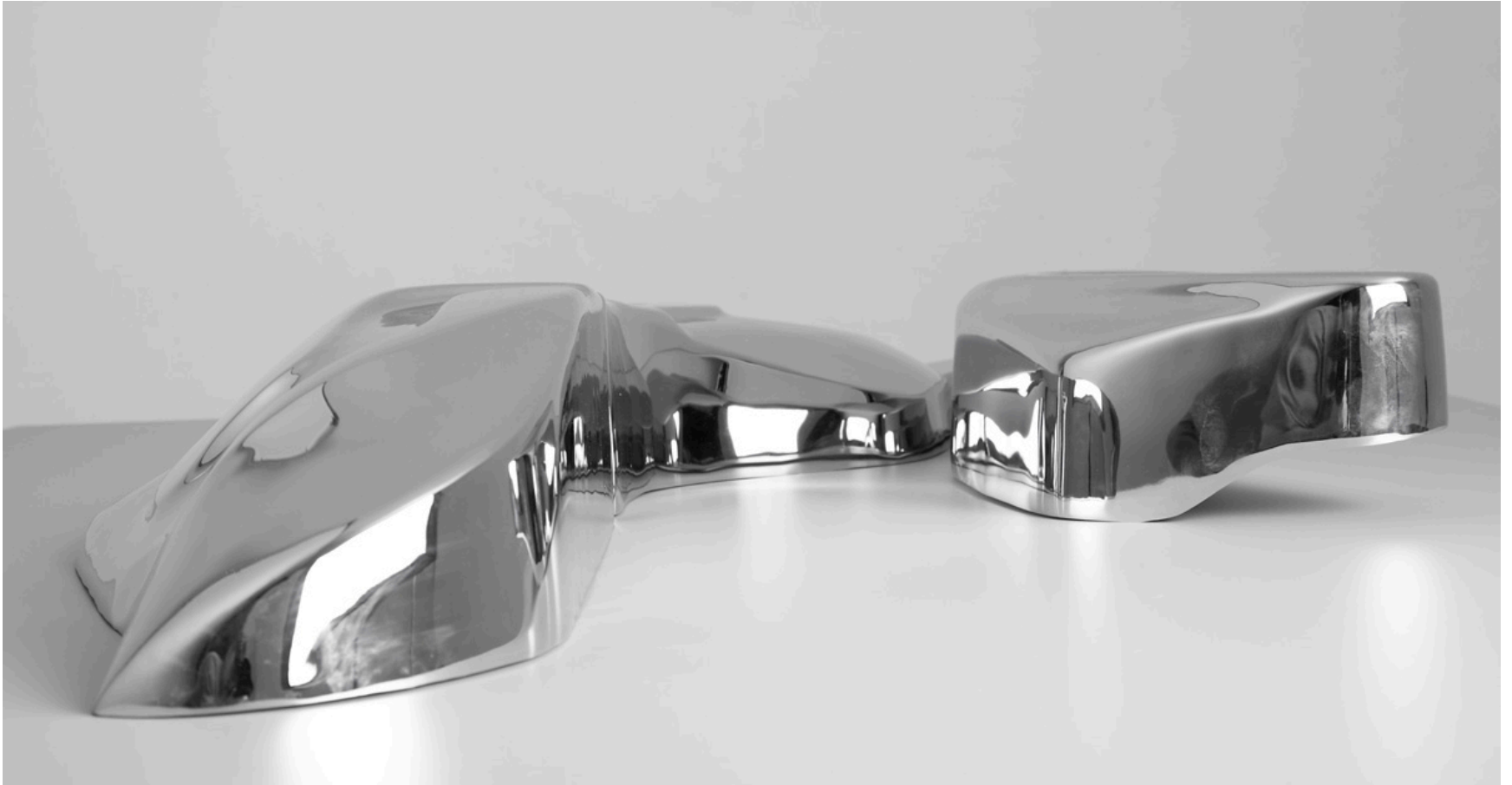
# Incident Report



# Incident Report

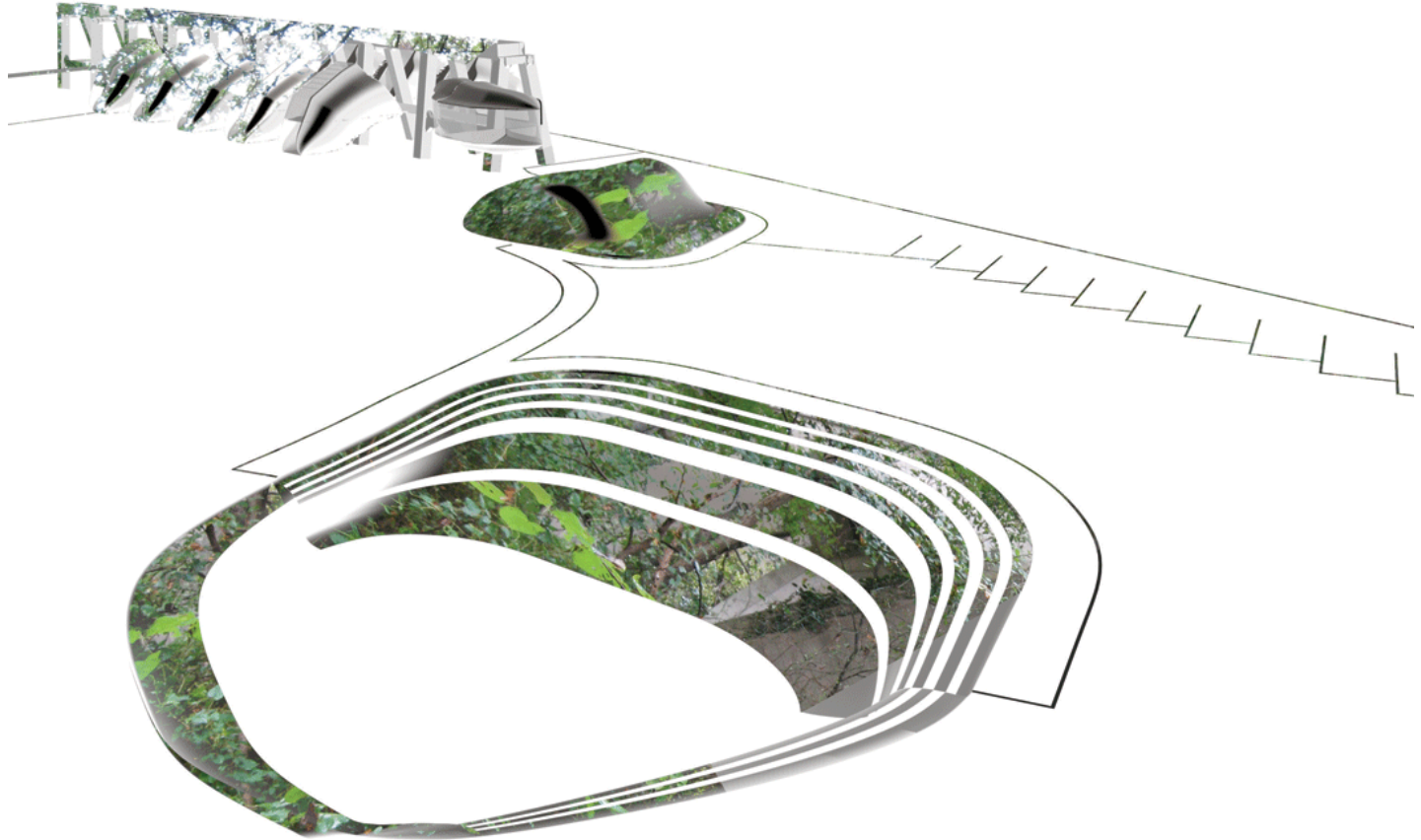


# Genetics Laboratory Osaka



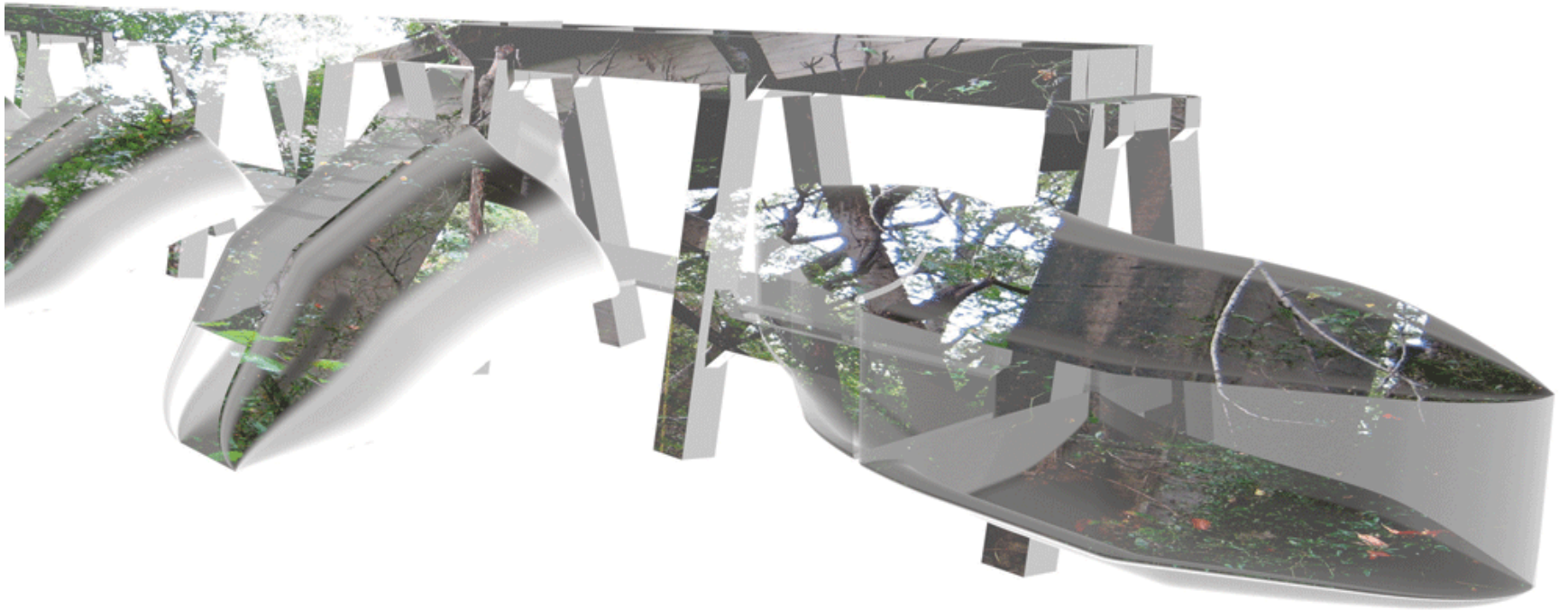


# Texas Artist Residency





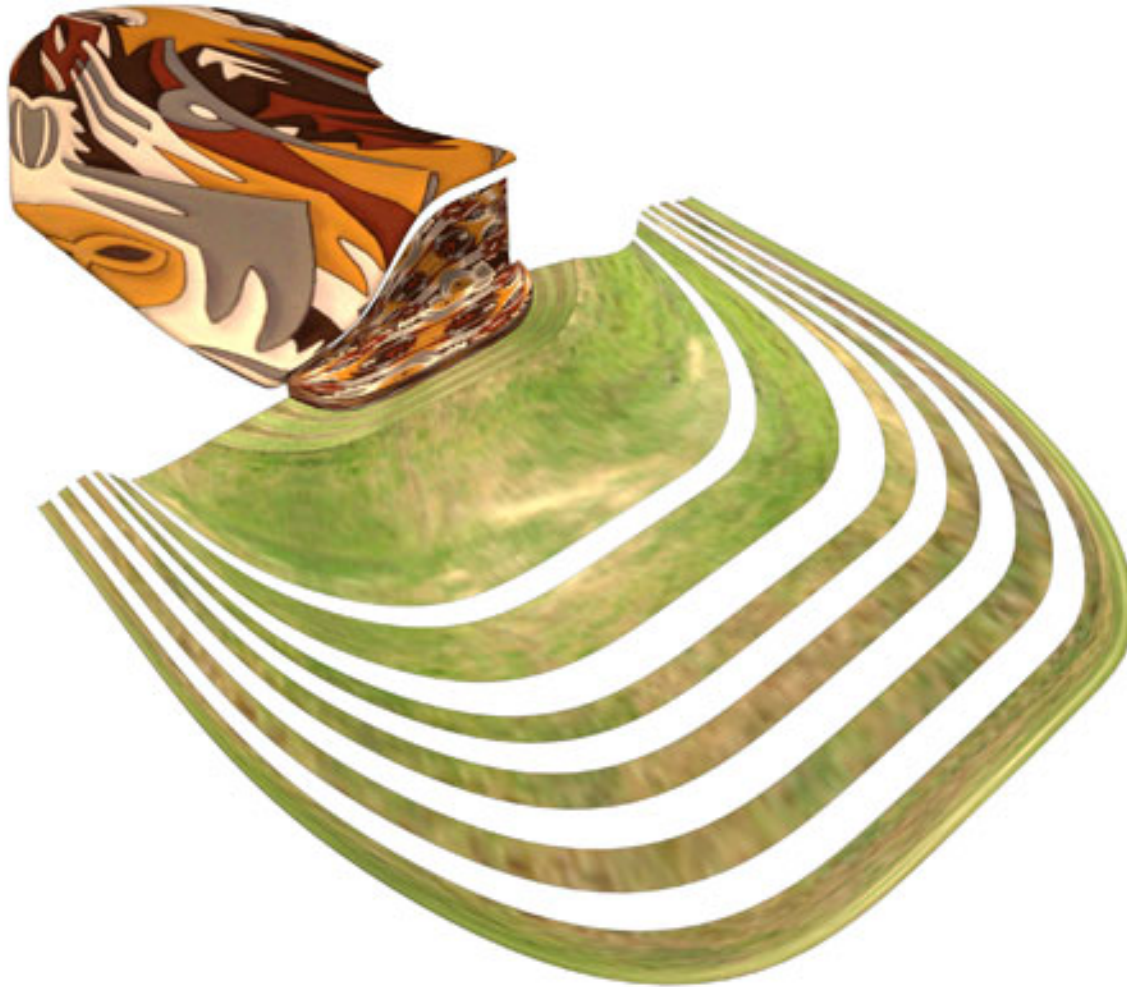
# Texas Artist Residency



# LRTX ARTIST RESIDENCY ~ LA REUNION, TEXAS



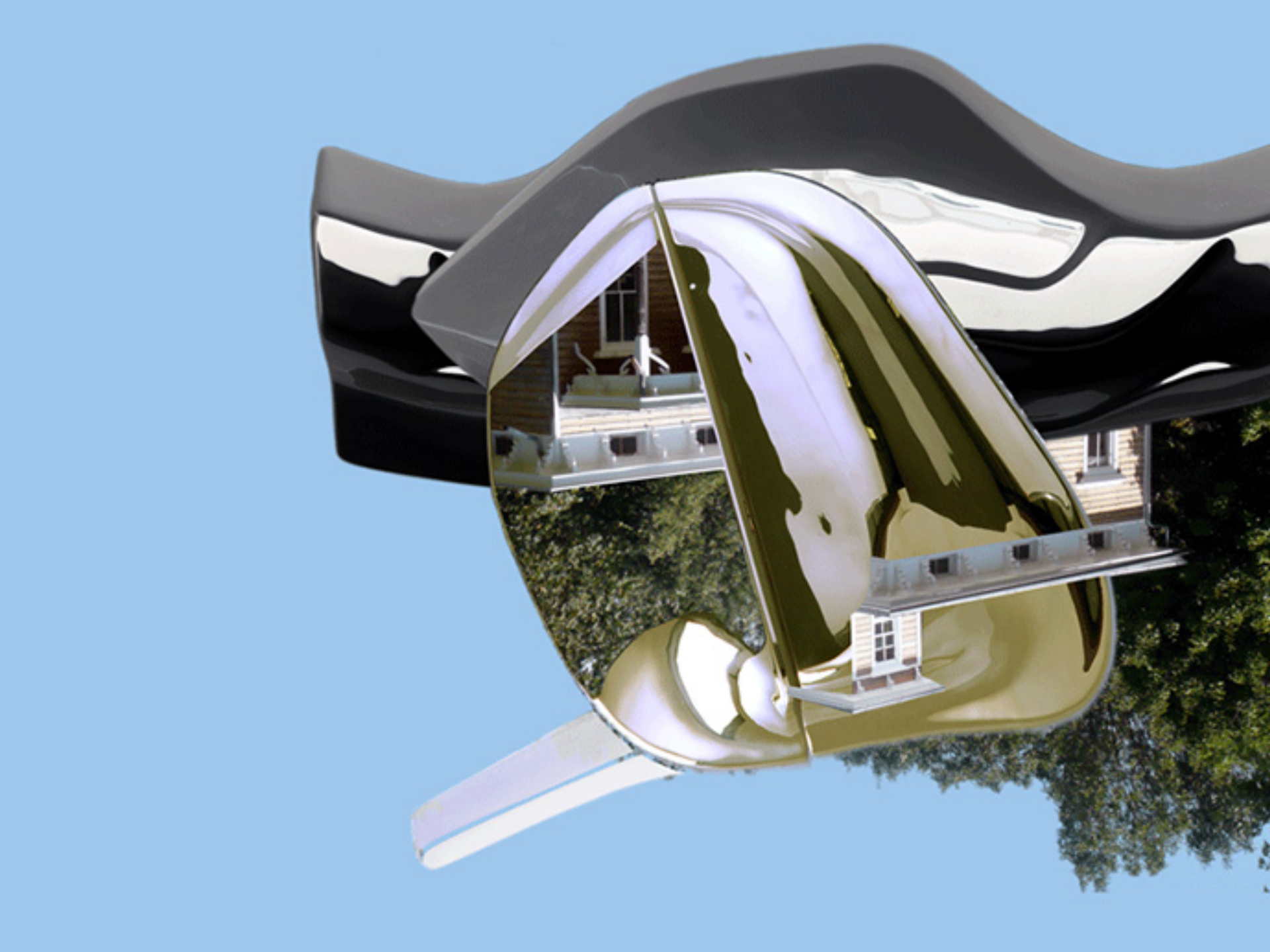
# Rwanda Theater



Rwanda Theater

# Africa's Hope





# Kohler Arts/Industry: Chrome



S.O.S.

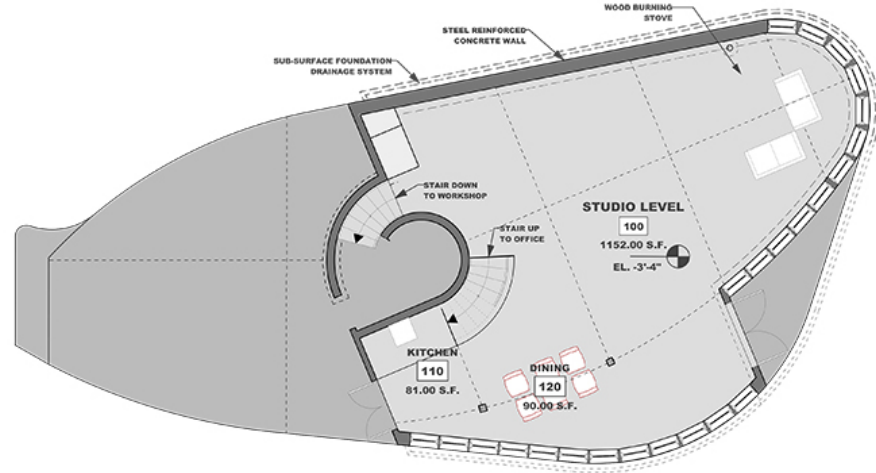
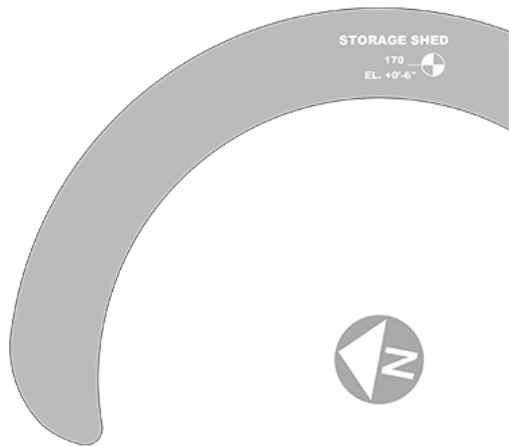


# Appendages/ Enameled





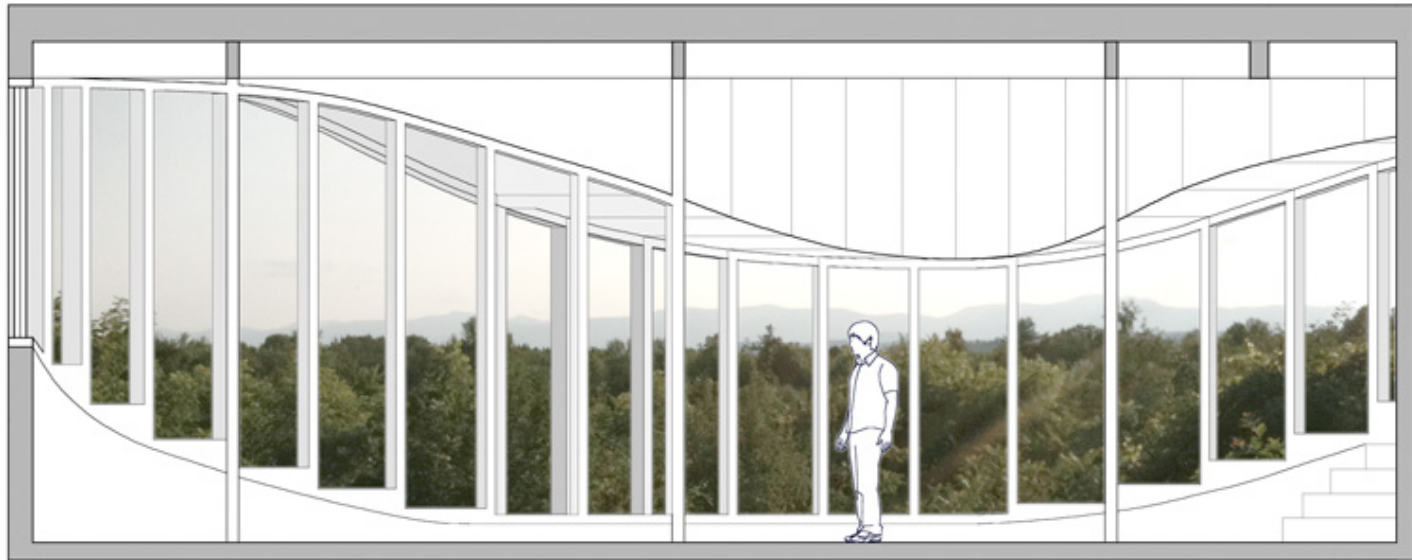
# Cleater Studio/ Hudson Valley



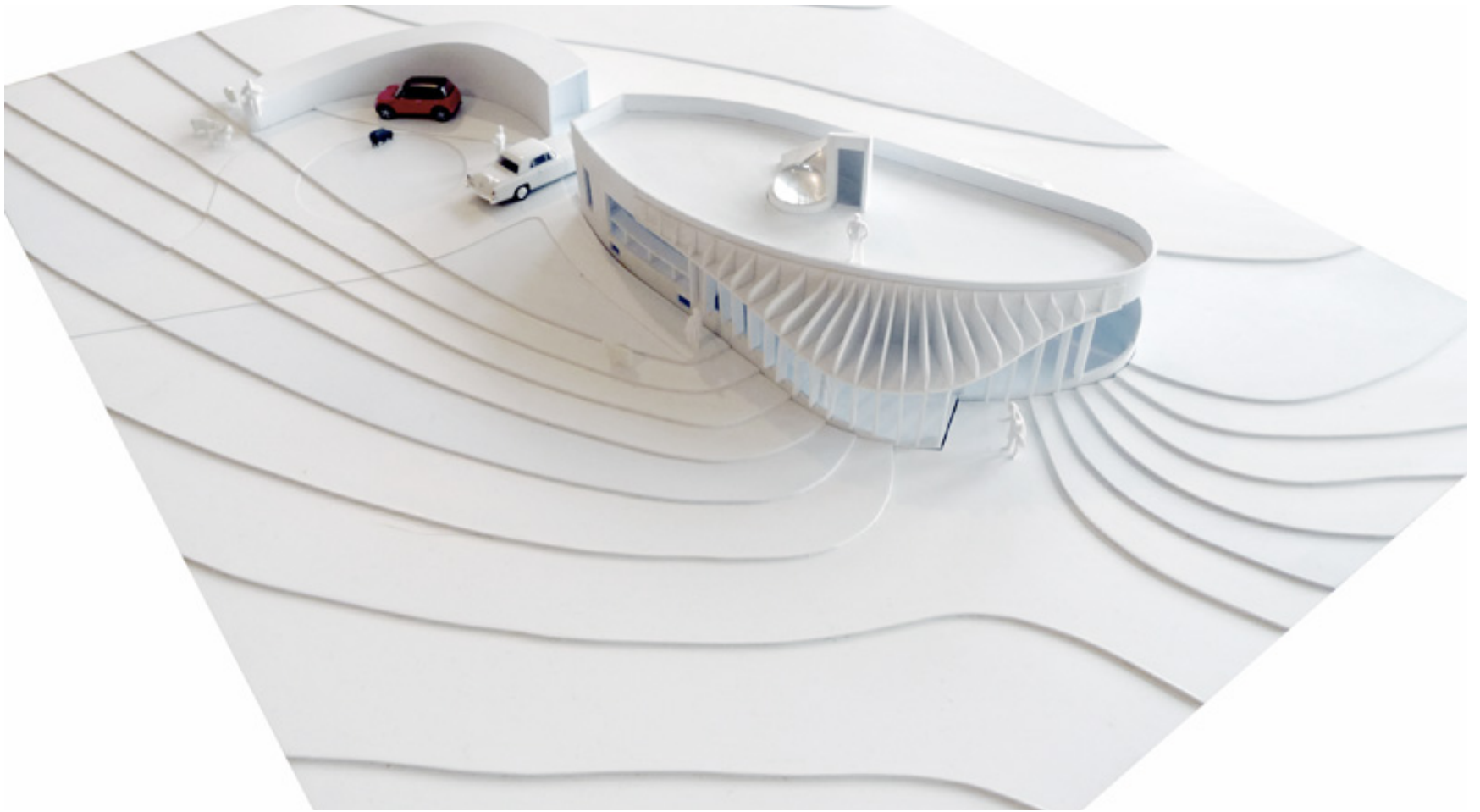
# Cleater Studio/ Hudson Valley



# Cleater Studio/ Hudson Valley

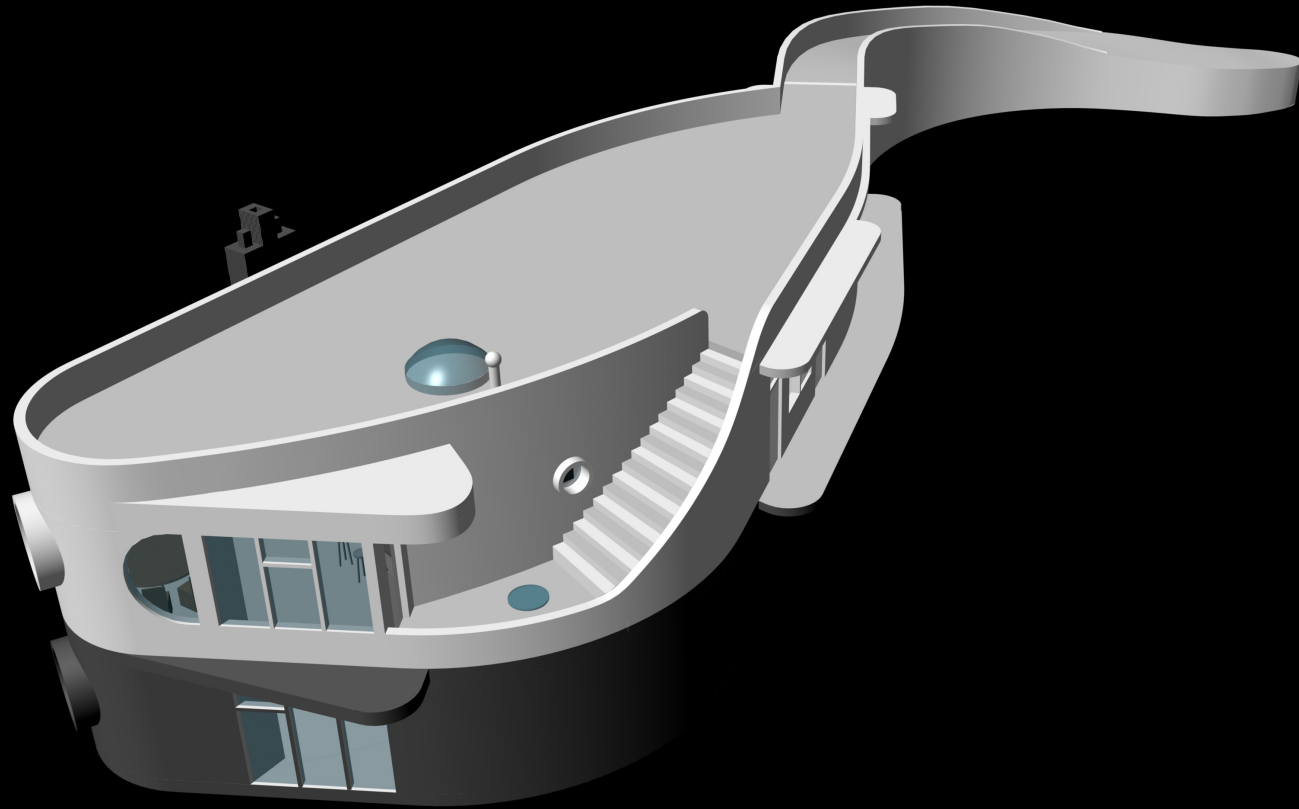


# Cleater Studio/ Hudson Valley





# Cleater Studio/ Hudson Valley



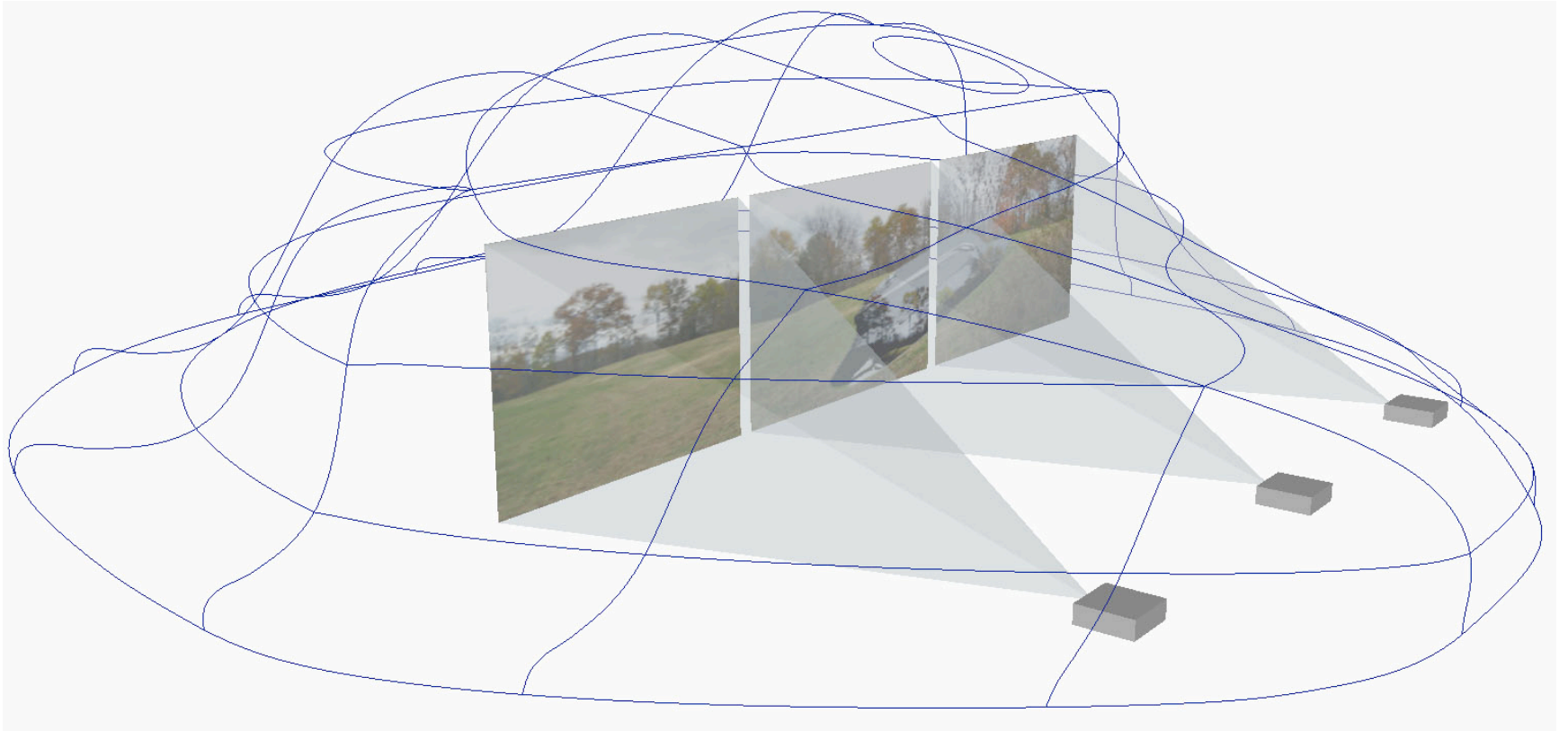
# *'Project Pavilion'*

**Solar Powered Multi-Media Environment**



***“The use of an electronic membrane on parts of the exterior surface will act as a luminous cloak. I like to think of the structure as an advanced sundial with a living surface that responds to the amount of energy it absorbs and emits.” John Cleater***

# Project Pavilion/ Art OMI





# *Sky Pavilion*

@ Art OMI, Ghent , NY



**Cleater Studio**  
**Augmented Reality (AR)**

# Peeling Layers of Space Out of Thin Air



@ ICA Boston. MA



# @ Sydney Opera House



# @ High Line NYC

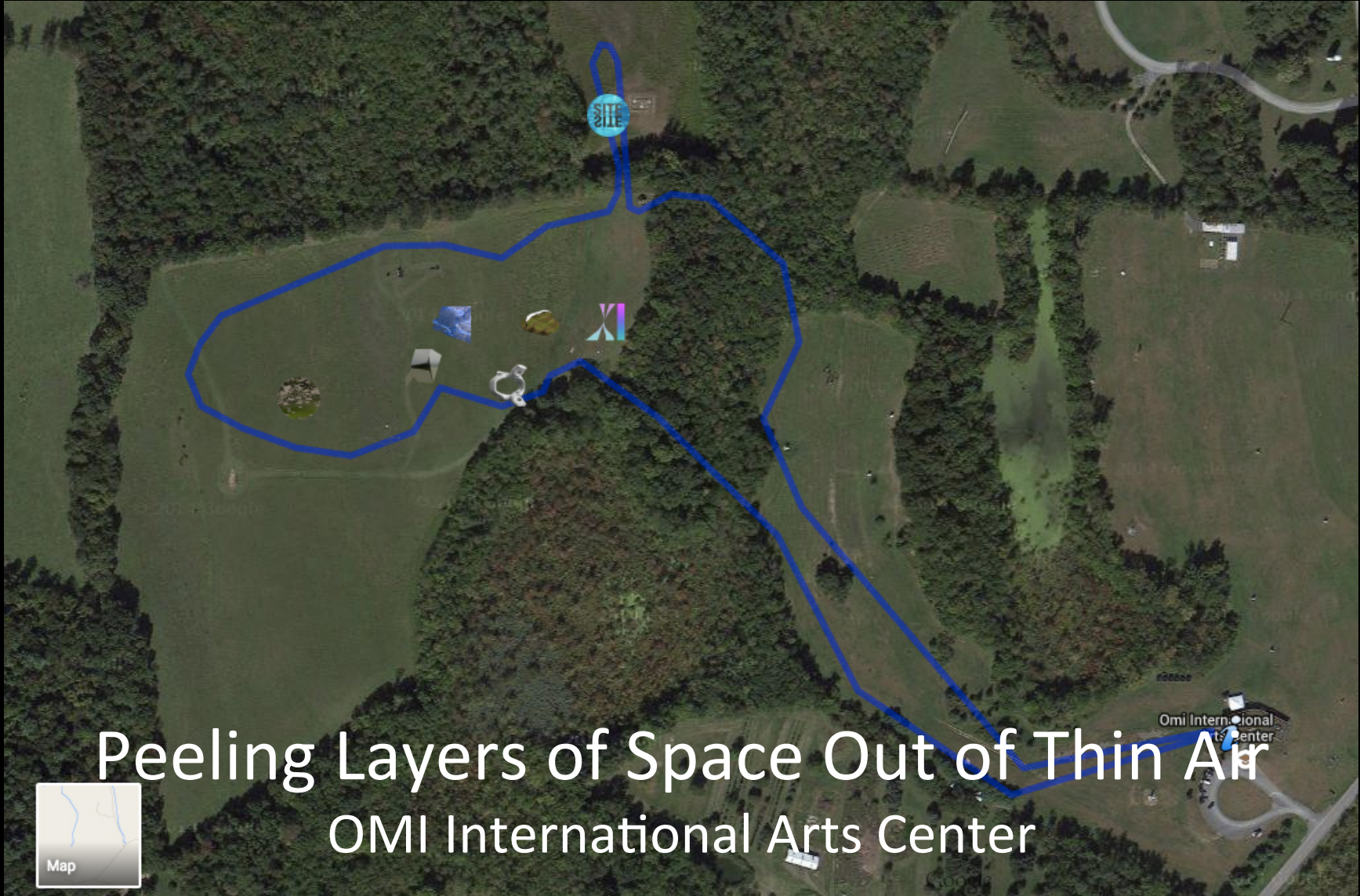


**@ DUMBO Arts Festival**



@Piazza San Marco 2011





# Peeling Layers of Space Out of Thin Air

## OMI International Arts Center

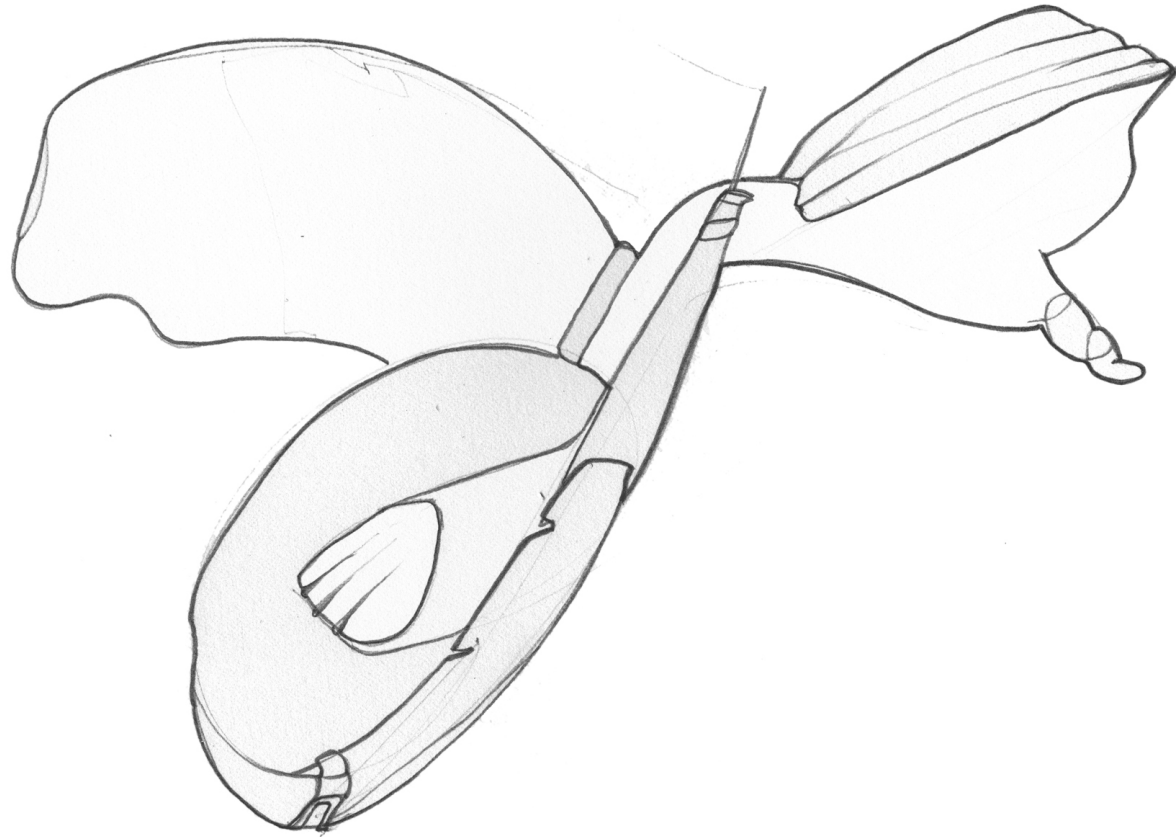




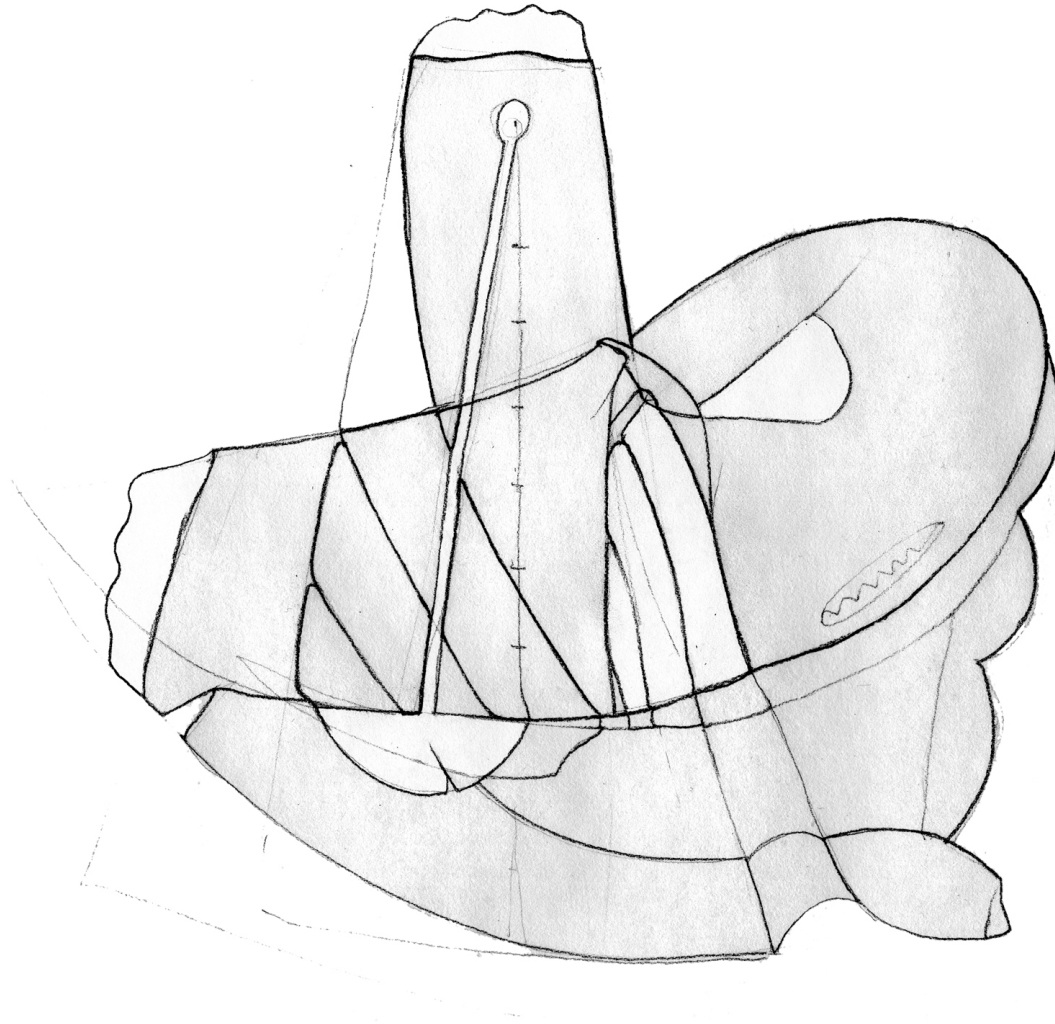


# I Must Be Seeing THINGS

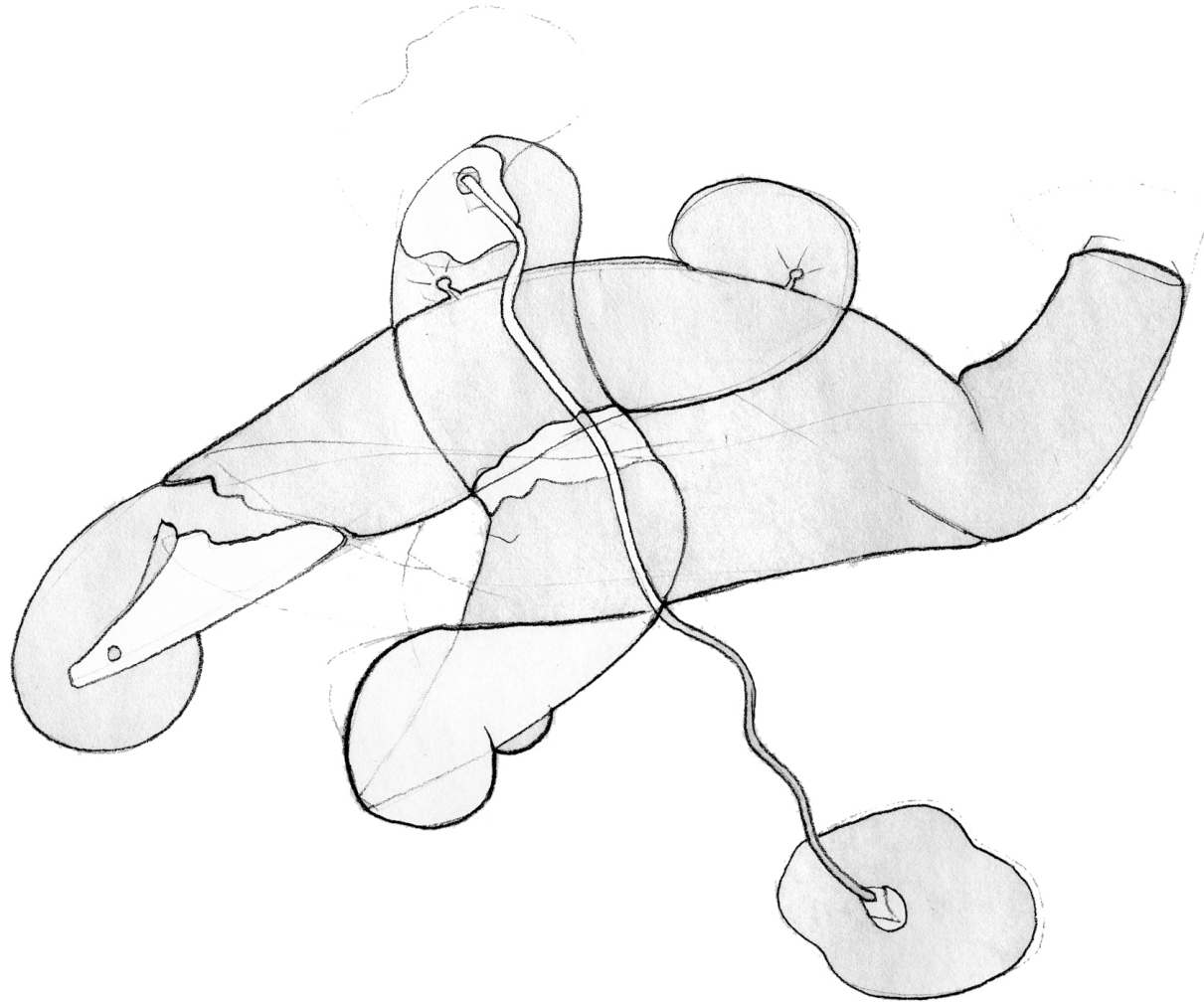




THING 37: Bending over backwards for the wrong cause may sting a little.



THING 1. A bandaged donut waits for the right moment to unravel. \*\*



THING 4. Caught unplugged while carving an acorn-fed pig. \*\*\*



# ThingOscope @CR10







# The Hermetic Museum @ Corcoran



**CORCORAN**  
GALLERY OF ART • COLLEGE OF ART + DESIGN

500 Seventeenth St. NW  
Washington D.C. 20006  
[www.corcoran.edu](http://www.corcoran.edu)  
(202) 639-1800

## *The Hermetic Museum* by John Cleater

*Manifest:AR* Opening Reception: August 14, 2013 ~ 5pm  
Panel discussion and reception: August 31, 2013 ~ 12pm

After viewing *Cloud 9* quilts through the *ThingOscope* in Corcoran Gallery 31, proceed to The White House with this card.

Download the 'Layar' app onto your mobile device and scan the image on the right of this card. Click on eARth to view elements of *The Hermetic Museum* as you try to make your way towards and inside The White House.

\*Note: Use the image as a map. It indicates the physical boundaries of *The Hermetic Museum*.

[www.corcoran.edu/exhibitions/manifest-ar](http://www.corcoran.edu/exhibitions/manifest-ar)  
[www.cleater.com/hermetic](http://www.cleater.com/hermetic)

Gallery 31 is the Corcoran Gallery of Art's dedicated exhibition space for Corcoran College of Art + Design



# The Hermetic Museum



# The Hermetic Museum



# The Hermetic Museum



500 Seventeenth St. NW  
Washington D.C. 20006  
[www.corcoran.edu](http://www.corcoran.edu)  
(202) 639-1800

## *The Hermetic Museum* by John Cleater

*Manifest:AR* Opening Reception: August 14, 2013 ~ 5pm  
Panel discussion and reception: August 31, 2013 ~ 12pm

After viewing *Cloud 9* quilts through the *ThingOscope* in Corcoran Gallery 31, proceed to The White House with this card.

Download the 'Layar' app onto your mobile device and scan the image on the right of this card. Click on eARth to view elements of *The Hermetic Museum* as you try to make your way towards and inside The White House.

\*Note: Use the image as a map. It indicates the physical boundaries of *The Hermetic Museum*.

Audio created by John Cleater with Dan Dobson and Brian Dewan  
*Cloud 9* quilts fabricated by Judith MacDonald

[www.cleater.com/hermetic](http://www.cleater.com/hermetic)

Gallery 31 is the Corcoran Gallery of Art's dedicated exhibition space for Corcoran College of Art + Design



# Cloud 9: A - Z



# Cloud 9: sides I/J



# Cloud 9: sides A/B



# Cloud 9: sides E/F





# Cloud 9: sides G/H



# Cloud 9: sides K/L



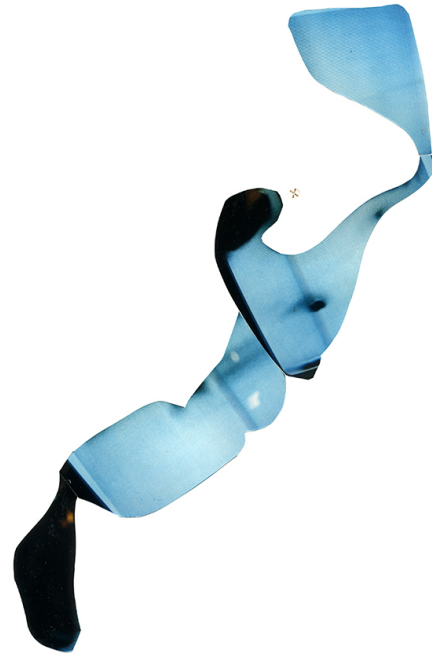
# Cloud 9: sides M/O



# Cloud 9: sides N/Q



# Cloud 9: sides W/X



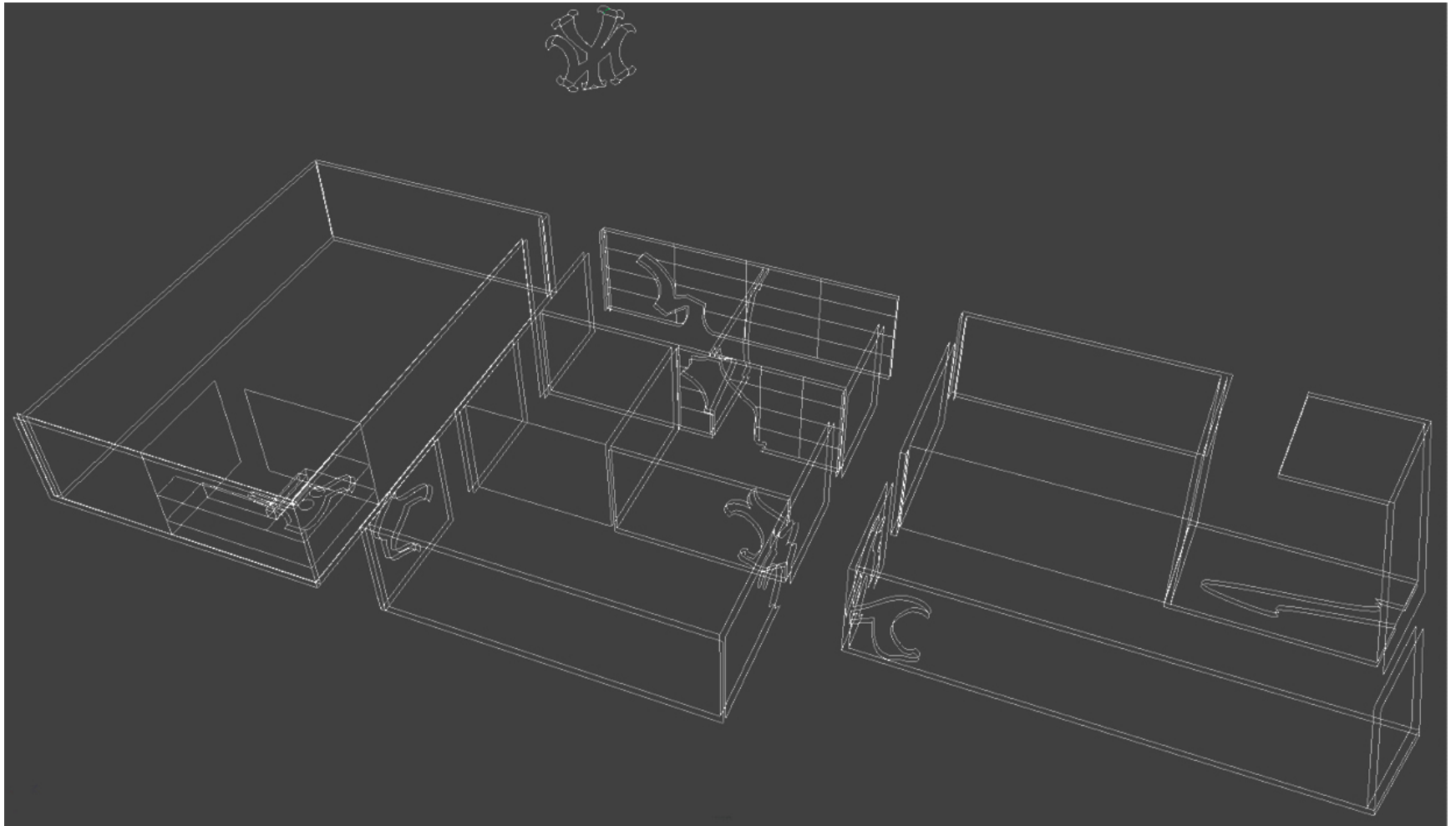
Brooklyn College/ BCCCP



Brooklyn College/ BCCCP



# Brooklyn College/ BCCCP





Brooklyn College/ BCCCP



Brooklyn College/ BCCCP



# House / Divided

**FORECLOSED**



**THE BUILDERS ASSOCIATION  
2011**

# Hallway



**FORECLOSED**

**THE BUILDERS ASSOCIATION  
2011**

# Sun Room

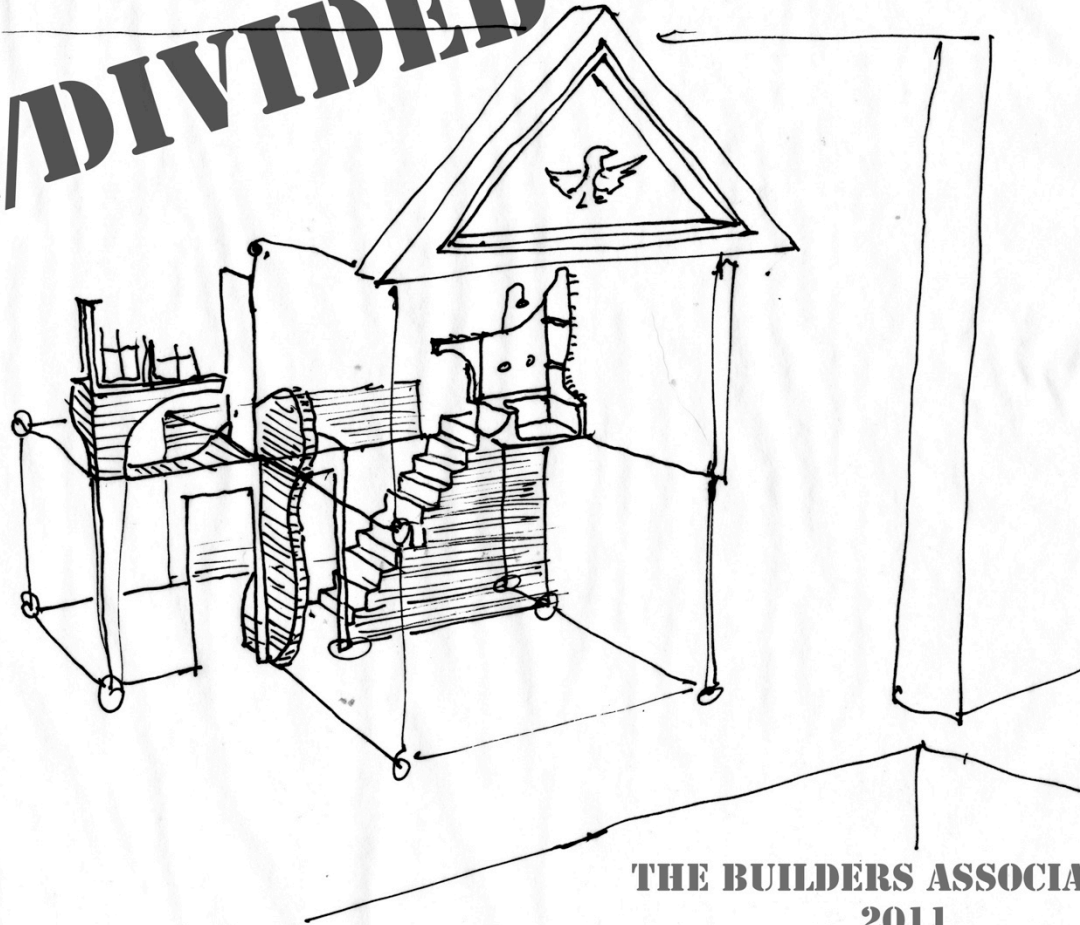
**FORECLOSED**



**THE BUILDERS ASSOCIATION  
2011**

# The Set

**HOUSE/DIVIDED**



**THE BUILDERS ASSOCIATION  
2011**

# House / Divided



# House / Divided





# House / Divided



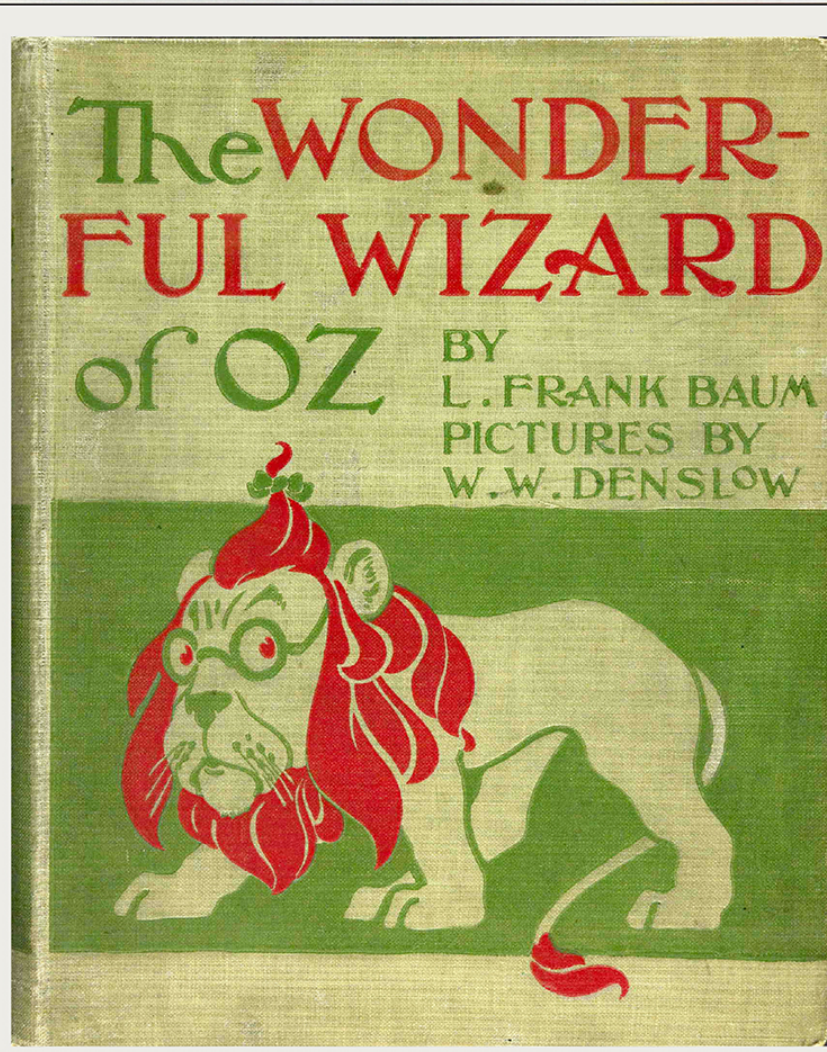
# House / Divided



# PLAYBILL®

MONTCLAIR STATE THEATER  
MONTCLAIR, NJ

*Elements of OZ* by The Builders Association



[WWW.PLAYBILL.COM](http://WWW.PLAYBILL.COM)

# John Cleater

work • about • news • contact

